

SOLENT GUILD OF WOODCARVERS & SCULPTORS

Weekend Passions: the secret lives of everyday folk

by Steve Hughes – January/February 2017

We humans are a passionate, but complex bunch. For the most part, only our loved ones and close work colleagues gain any sort of insight into what makes us tick. Some of us go through our entire lives intentionally or unintentionally keeping our dreams, aspirations or wishes close to our chest. Maybe it's just something about being British. It's often only through our actions, perhaps in the form of a pastime, hobby or even a part-time job that these "passions" come to the surface.

All the people who have volunteered to take part in these photographic essays have a story to tell. I am extremely grateful for their time and co-operation and hope that, between us, we have captured a small part of who they are in the portraits and accompanying words.

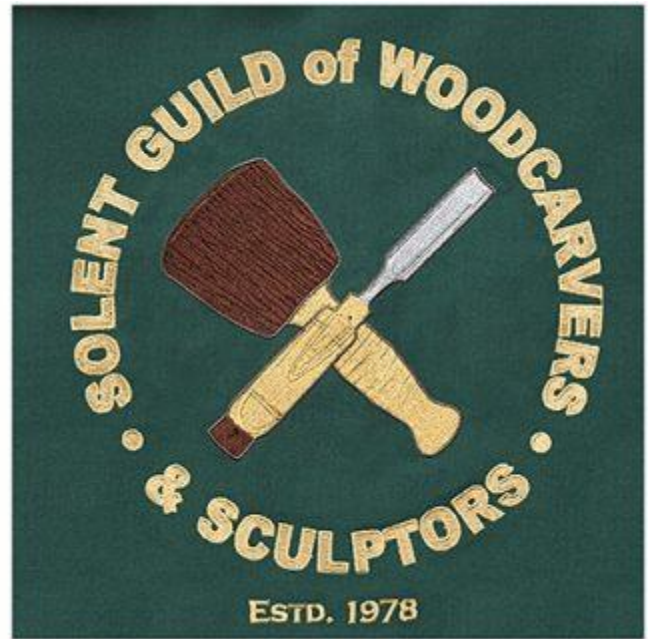
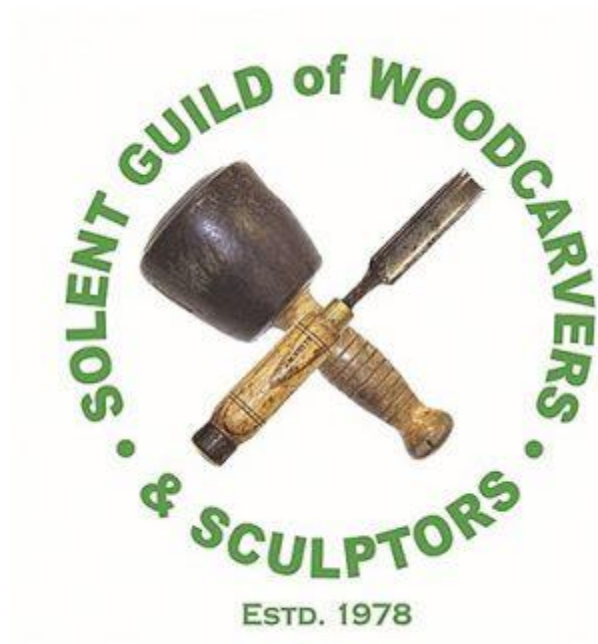
The following is a photographic essay about the Solent Guild of Woodcarvers & Sculptors and some of its Members. There is an overview about the Guild followed by the work of individual Members in three parts.

Woodcarvers show off their skills part one

by Steve Hughes - Wednesday, February 1, 2017

<http://www.retinaphotography.co.uk/woodcarvers-show-off-their-skills-part-one/>

Last time we visited the Solent Guild of Woodcarvers and Sculptors, we had an **overview of the group** and an insight into how and when they were formed. This time we get personal.



Let's meet some members of the Guild and their work

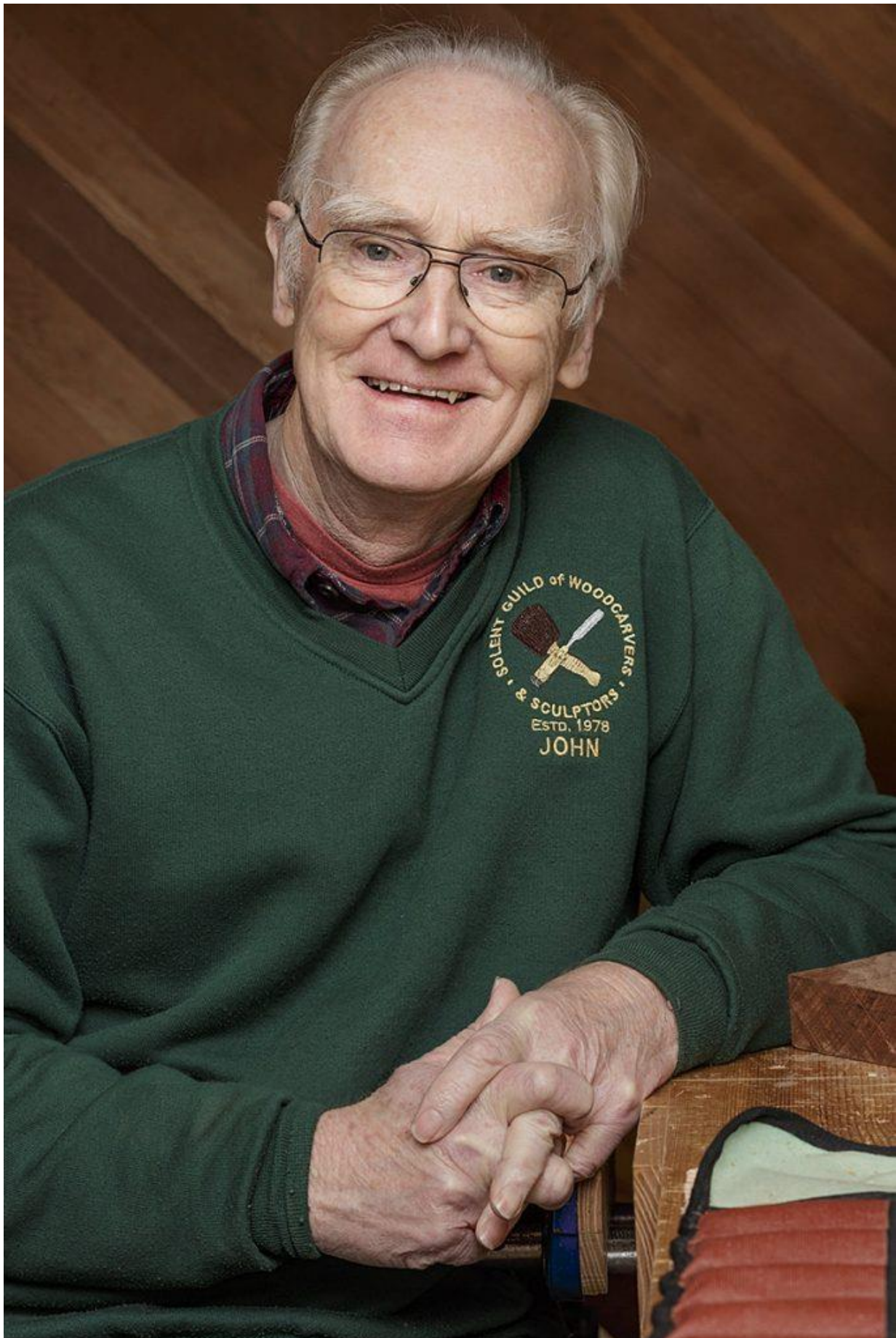
George Palmer [Guild Chairman]







John Vardon [Guild Secretary]

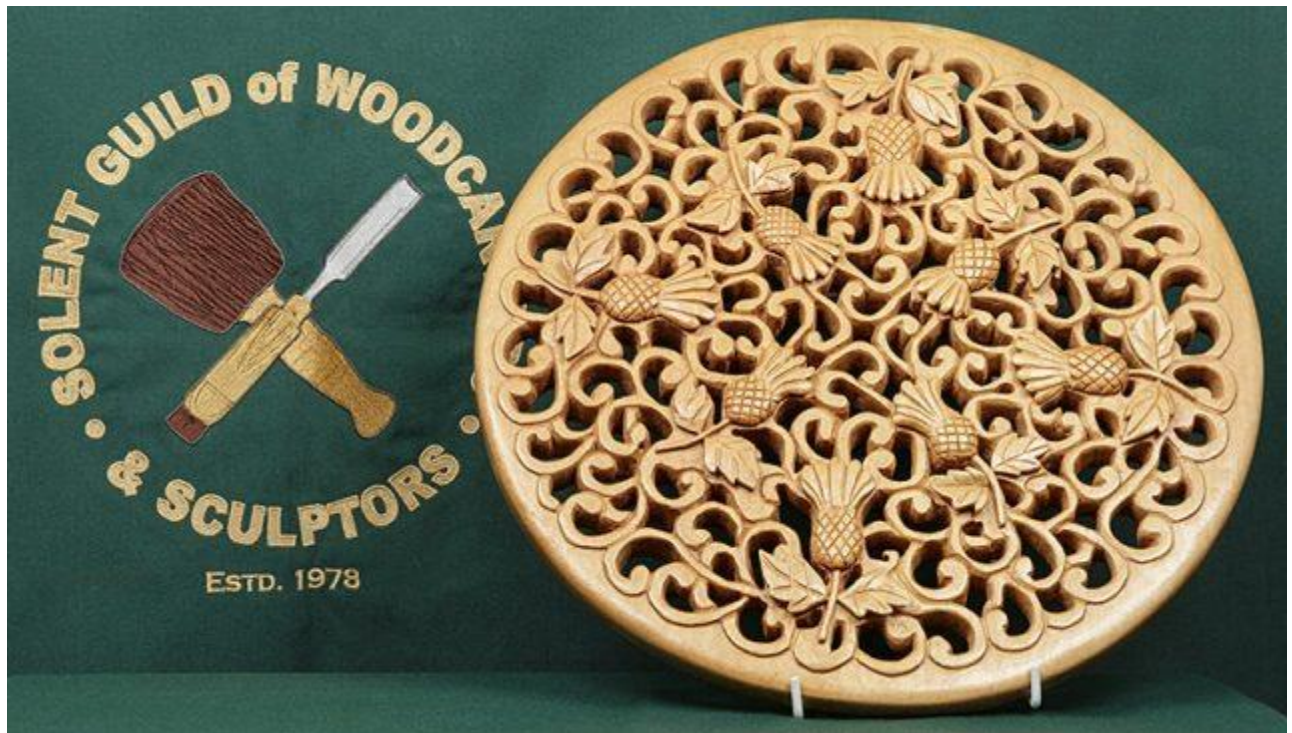




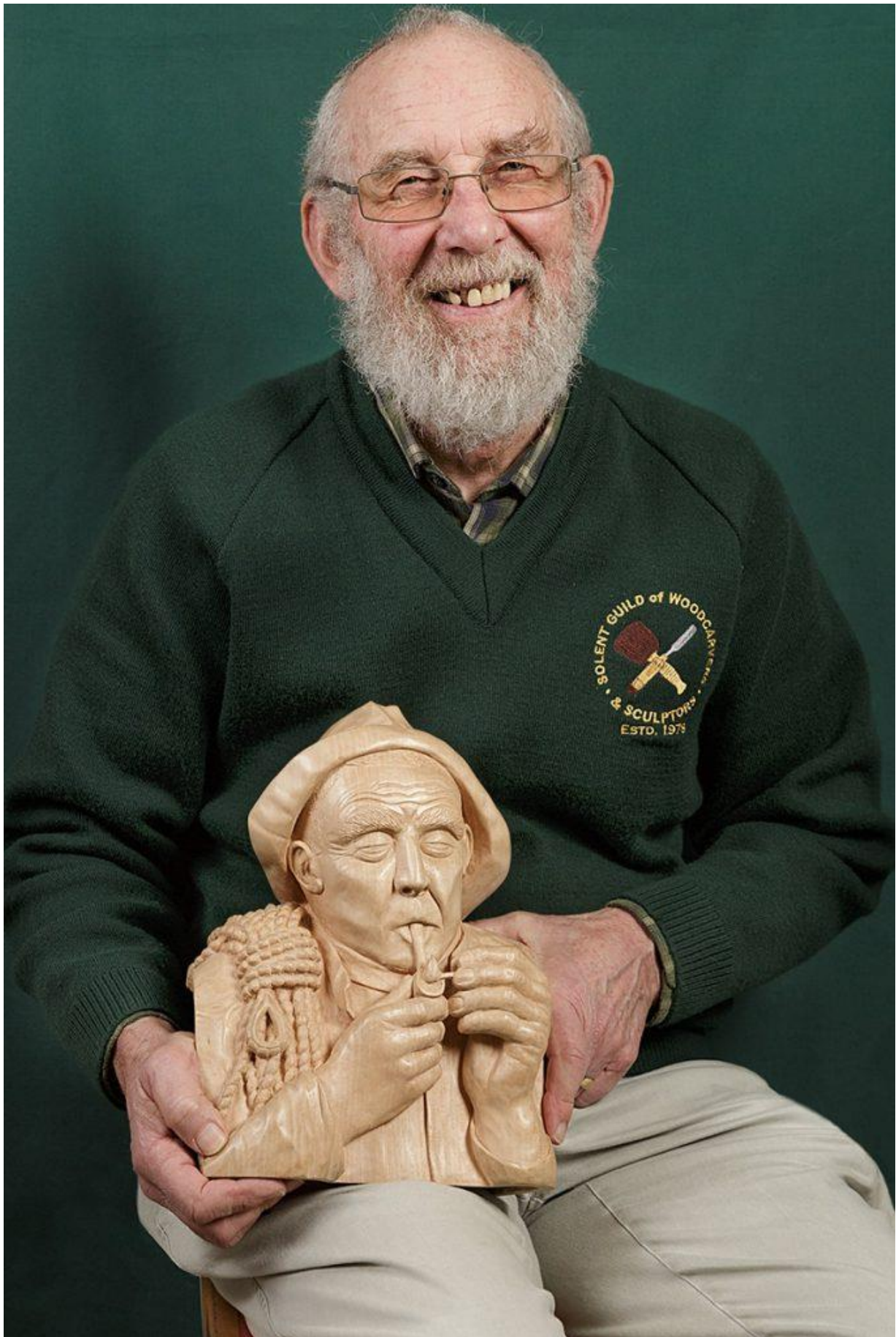


Jean Cripps [Guild Treasurer]

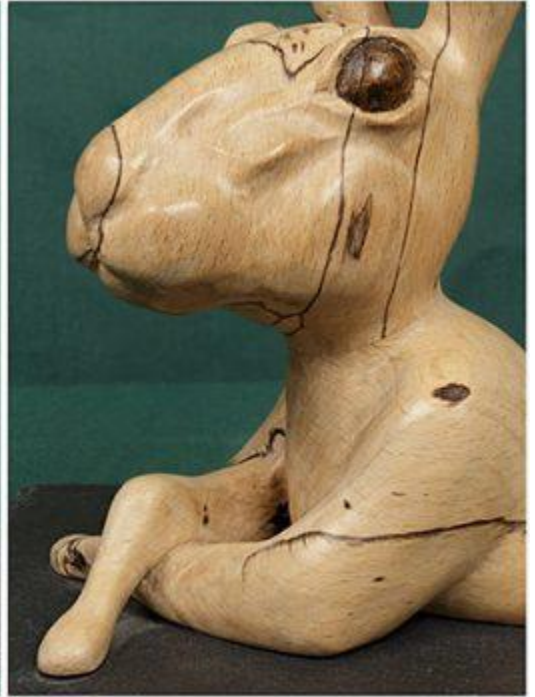
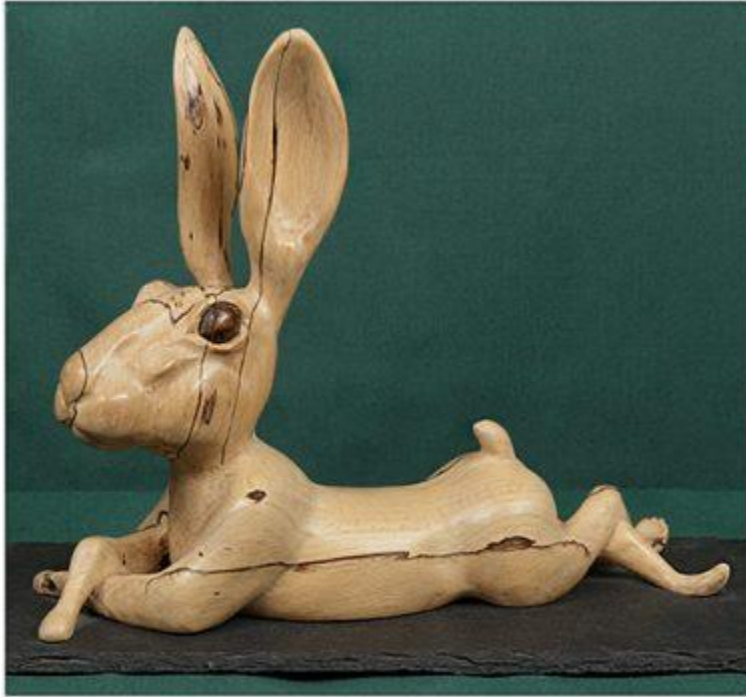




Andy Banger







Lin Palmer [Newsletter Editor]





I'd like to say a big thank you to all the Guild members who have taken part and to say that I'm truly in awe of your skill and craftsmanship. A special thanks to John Vardon and George Palmer who corralled the members and gathered the information as necessary to support the story.

[Click here to read the background story of the Guild](#)

[Click here to meet the members Part 1](#)

[Click here to meet the members Part 2](#)

[Click here to meet the members Part 3](#)

Web Links and References of interest

SGWC&S: Solent Guild of Woodcarvers and Sculptors

Web: www.solentguildofwoodcarvers.org.uk

English Woodlands Timber

Web: <http://www.englishwoodlandstimber.co.uk>

W.L West and Sons Ltd

Web: <http://www.wlwest.co.uk>

The West Sussex Woodturners

Web: <http://www.westsussexwoodturners.co.uk/>

Geisler-Moroder School [Austria]

Web: http://www.sc_hnitzschule.com

Portland Sculpture & Quarry Trust

Web: <http://learningstone.org>

Sussex Woodcraft Society

Web: <http://www.sussexwoodcraft.co.uk>

Forest of Bere Woodturners

Web: <http://www.forestofberewoodturners.org.uk>

Bentley Wildlife Carvers

Web: <http://bentleywildlifecarvers.weebly.com>

Selsey Wood Carvers

Web: <http://www.selseywoodcarvers.co.uk>

All content is copyright Steve Hughes / Retina Photography and may not be reproduced without prior permission